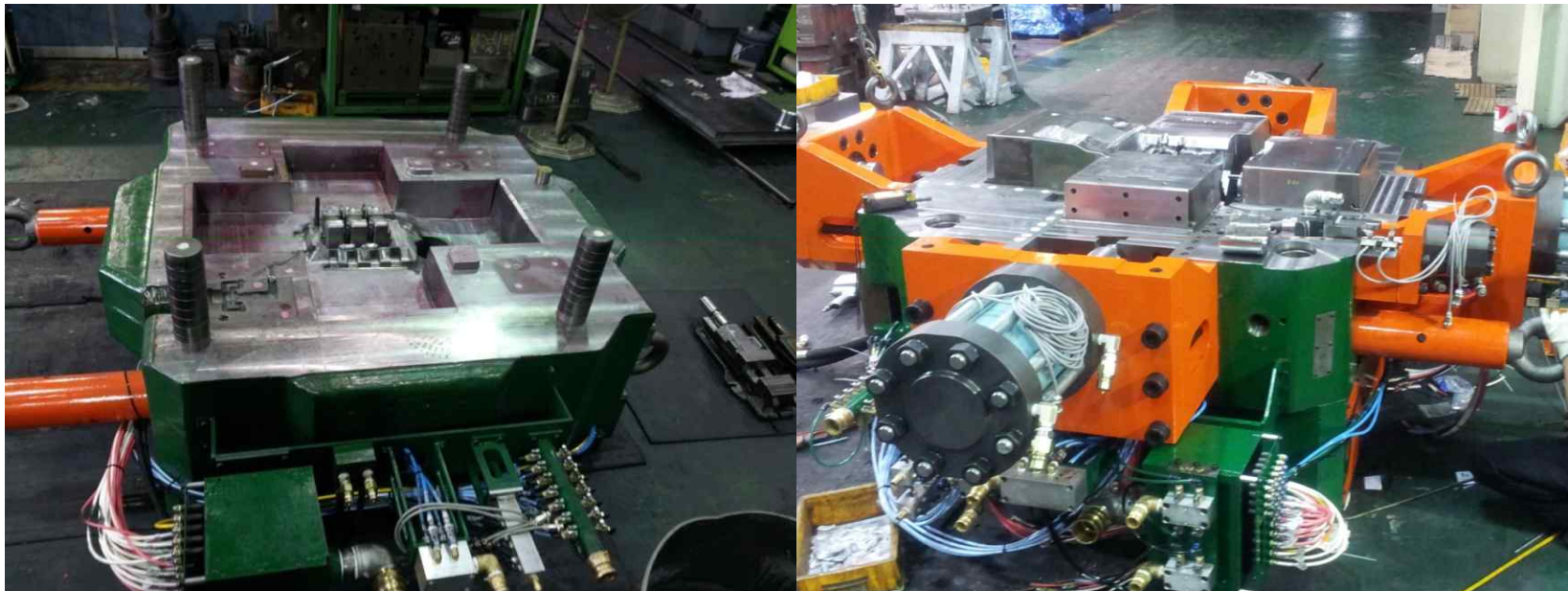


COMPANY PROFILE



(Head Office) 54, Sanbon-ro 48beon-gil, Gunpo-si, Gyeonggi-do, Korea
TEL 031) 451-7001,2,5

(Second Plant) 52-19, Sanbon-ro 48beon-gil, Gunpo-si, Gyeonggi-do, Korea
FAX 031) 451-7003

E-mail : shinchoon_b@shinchoon.co.kr
www.shinchoon.co.kr

CONTENTS

- ❖ COMPANY INTRODUCTION
- ❖ COMPANY PRINCIPLES
- ❖ CORPORATION HISTORY
- ❖ ORGANIZATION CHART
- ❖ COOPERATIVE COMPANIES
- ❖ MAJOR CLIENTS
- ❖ BUSINESS ITEMS
- ❖ CRITICAL FACILITIES

COMPANY INTRODUCTION

Hereby we wish your company's tremendous development and prosperity sincerely.

We appreciate your constant encouragement and support

Our company was established in November 23rd, 1998, called WON CHANG ENG., which was mold manufacturing and trading company as a parent company, and has been developed so far.

With a rapidly changing industry environment as well as change of mold in customers' needs,

Shinchoon Co. Ltd. was established entering into partnership with ISK Ltd in Japan on August 1st, 2002, to meet more services at a high quality, separating mold manufacturing department from WON CHANG ENG.

Shinchoon Co., Ltd. has been making mold based on accumulated know-how and wealth of knowledge and experience in the field of Japan and South Korea in the mold sector.

Here by we'll simply be introducing our company, promising to be faithful of our motto of company, customer satisfaction.

COMPANY PRINCIPLES

Customer First

- We will do our best in order to ensure to get greater pleasure, putting a top priority on customer satisfaction.
- We promise high quality, time delivery and satisfactory price, to cope with all process from design and production to try or AS with careful consideration.
- We are hiring multi-lingual human resources due to relationships with many overseas trading, We will continue to strive to make you feel comfortable

Self-Reliance

- We will keep the promise speedy conduction of business with tense relationship making loose ties with customers based on mutual trust.

Introduction of New Concept

- We will make our best endeavors to lead the industry to introduce new technologies and management breaking stereotypes in this area.
- In addition, we will focus on the new technology, the introduction of equipment and employee training.

CORPORATION HISTORY

- Nov. 1998 Establishment of WON CHANG ENG., mold manufacturing and trading
- Aug. 2002 Establishment of Shinchoon Co. Ltd.(ISK KOREA)
- Jun. 2006 Registration of YAMAHA Co. Ltd.(Kumamoto)

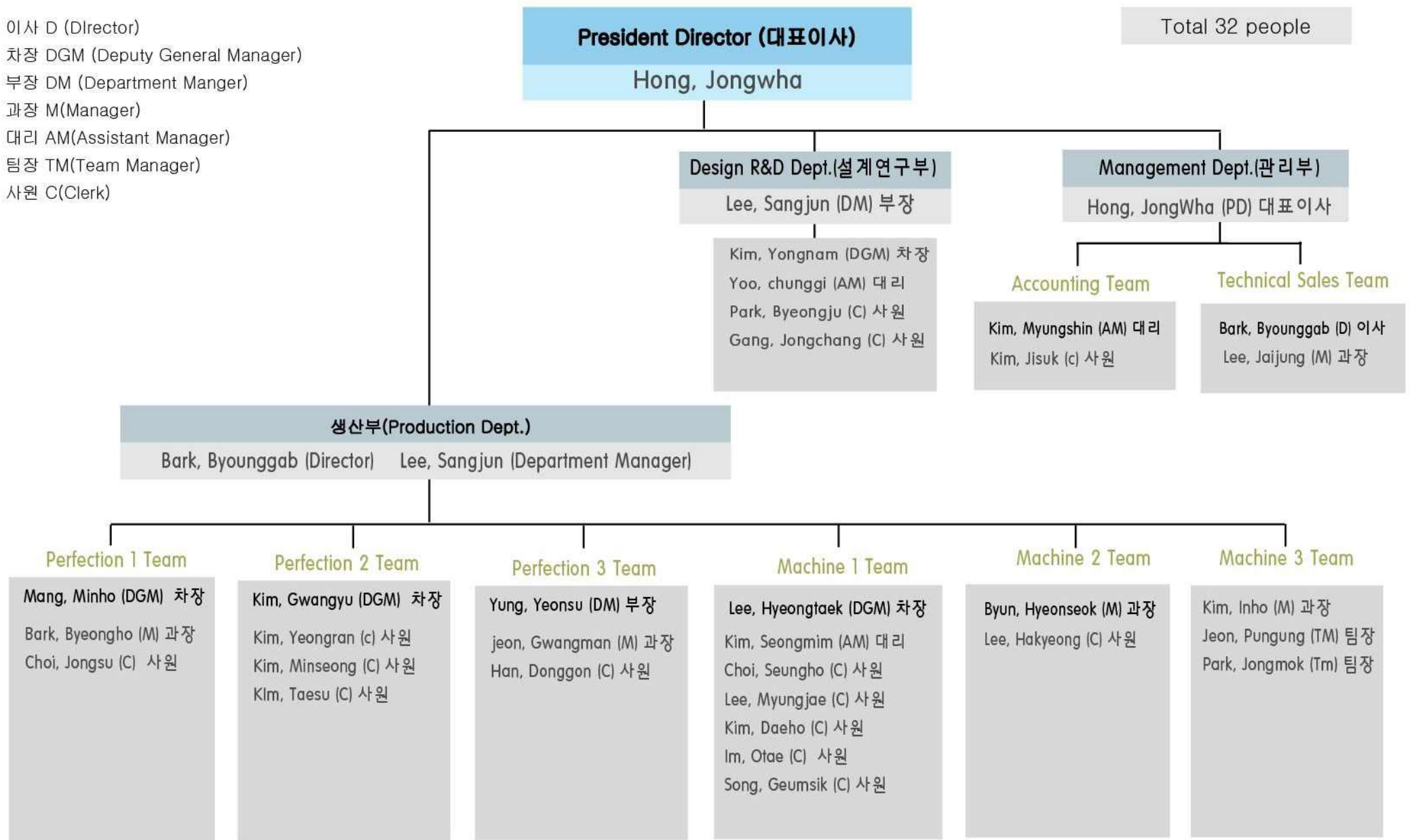
Ship and motorboat production company mold company

- Feb. 2007 DONGSEO MACHINE & TOOL CO., LTD(KOREA)
- Mar. 2008 HYUNDAI , KIA MOTORS CO., LTD
- Jan.2010 Establishment of PT.HMI INDONESIA, Mold factory

ORGANIZATION CHART

- 이사 D (Director)
- 차장 DGM (Deputy General Manager)
- 부장 DM (Department Manger)
- 과장 M(Manager)
- 대리 AM(Assistant Manager)
- 팀장 TM(Team Manager)
- 사원 C(Clerk)

Total 32 people



COOPERATIVE COMPANIES



PT. HMI INDONESIA (SHINCHON SUBSIDIARY COMPANY)

KAWASAN INDUSTRY KIIC JL. MALIGI IV LOT K-1D, SUKALUYU

KECAMATAN TELUK JAMBE. KARAWANG 41361

TEL 021-8911-7140 / FAX 021-8911-7174

Incorporation 2010년 01월 28일

President 홍종화

Workforce 20명

Business contents 다이캐스팅. 플라스틱 금형제작

MAJOR CLIENTS

❖ DOMESTIC

- HYUNDAI , KIA MOTORS CO., LTD
- DONGSEO MACHINE & TOOL CO., LTD(KOREA)

❖ FOREIGN COUNTRY

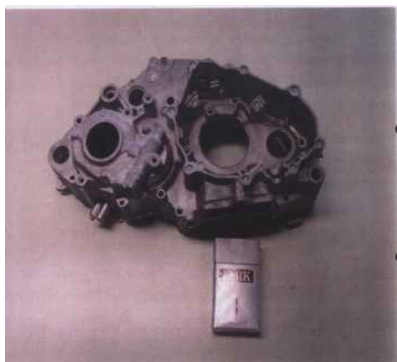
- KOIDE CO., LTD
- MAEDA ENG(JAPAN)
- PT.HM INDUSTRIES INDONESIA
- CAP CO., LTD

PRESENT CONDITION ON SALES

(UNIT : 10,000 \$)

		2014	2015	2016(Goal)
Shinchoon (ISK KOREA)	Exports	220	360	390
	KOREA	380	430	440
TOTAL		600	790	830
Shinchoon Indonesia (PT.HMI)		100	140	160
TOTAL		700	930	990

BUSINESS ITEMS



CRITICAL FACILITIES

DESIGN LIST

- 3D UNI GRAPHICSUX3(DESIGN) 2EA
- 2D AUTOCAD 2012 3EA
- WORK NC V17(CAM) 2EA
- NC BRAIN (2D-CAM) 3EA
- ANYCASTING S/W ADVISER ver 6.0 1EA
- (주) DUKIN 3D GAUGE VICTOR 1EA

MACHIN LIST

KAFO MACHINING CENTER PROCESSOR FEAFTURES 5 SIDES 27号機 (Horizontal)	DOOSAN WIRE NW 800 (L)
KAFO MACHINING CENTER PROCESSOR FEAFTURES 5 SIDES 22号機 (Horizontal)	SODICK WIRE AQ 750L (M)
HWACHEON MACHINING CENTER NO.12.5	HWACHEON MILLING MACHINE NO.2 – 3EA
HWACHEON MACHINING CENTER NO. 8.5	AICHI-OKUMA RADIAL (2500)
HWACHEON MACHINING CENTER NO.7	LATHE HL580*1500
HWACHEON HIGH-SPEED APPARATUS NO.6 – 2EA	GRINDER
HWACHEON MACHINING CENTER NO. 6.5 – 2EA	HOIST 20 TON
DOOSAN MACHINING CENTER NO. 6.5 - 2EA	HOIST 15 TON
HWACHEON SMART UAX	HOIST 2.8TON
MAKINO CNC 85W MGE(L)	ABESEIKI DIESPOTTING 200TON
MAKINO CNC 85 MGF (M)	
MAKINO CNC 60 MGF (S)	



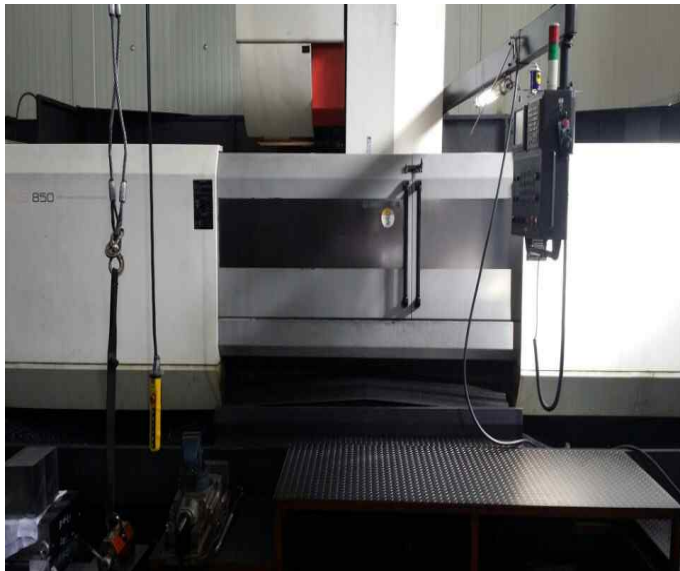
**KAFO MACHINING CENTER PROCESSOR
FEAFTURES 5 SIDES NO.27 (Horizontal)**



**KAFO MACHINING CENTER PROCESSOR
FEAFTURES 5 SIDES NO.22 (Horizontal)**



HWACHEON MACHINING CENTER NO.12.5



HWACHEON MACHINING CENTER NO. 8.5



DOOSAN MACHINING CENTER NO.7



HWACHEON MACHINING CENTER NO.6.5 – 2EA



DOOSAN CNC MACHIN CENTER(NO.6.5) 2EA



HWACHEON CNC MACHIN CENTER(NO.6) 2EA



MAKINO CNC 85W E.D.M (L)



MAKINO CNC 85 MGF E.D.M (M)



MAKINO CNC 60 MGF (S)



DOOSAN WIRE NW800 EDM (L)



SODIK WIRE AQ750L(M)



AICHI-OKUMA RADIAL MACHING



LATEH HL580*1500



HWACHEON MILLING MACHINE NO.2 3EA



GRINDER



ABESEKI DIESPOTTING 200TON



Department



Headquarters Factory



Headquarters Factory



Design Office(2nd plant)



3D Gauge Office(2nd plant)



2nd plant